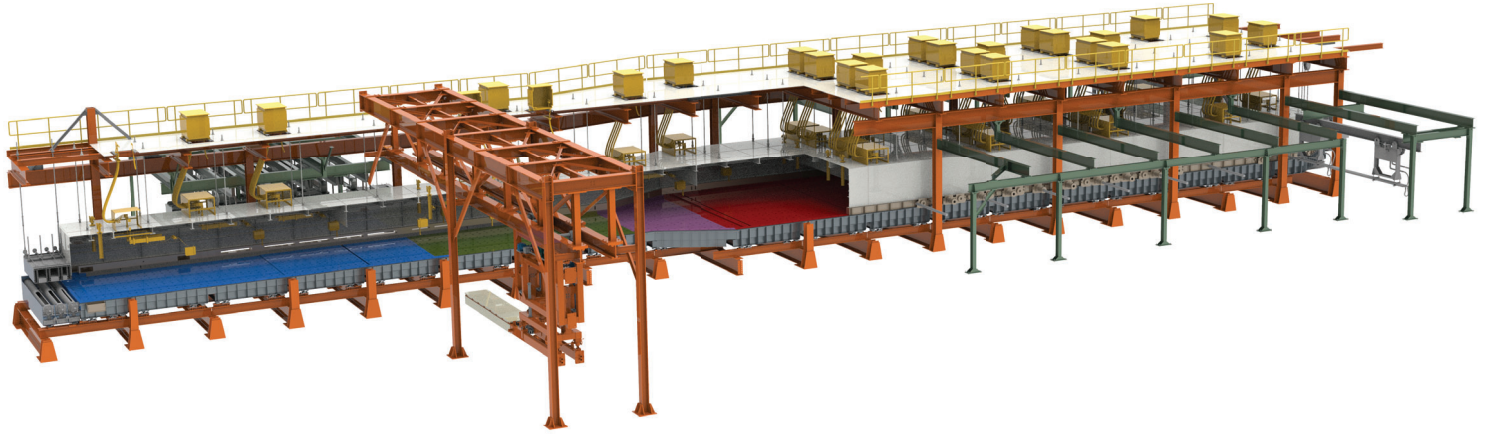


StewartFloat® Tin Bath

World Leading Tin Bath Provider

After over 35 years, Stewart has successfully installed 23 proven StewartFloat® Tin Baths worldwide, all of which remain fully operational today. Stewart's Tin Bath can produce glass ranging from an ultra-thin 0.12mm to 25mm in thickness. Additionally, StewartFloat® Tin Baths integrate effortlessly with the AcuraCoat® Online CVD Coating System, ensuring seamless performance and production efficiency.



The StewartFloat® Tin Bath is fully customizable with regards to: tonnage, thickness, ribbon width, automation level, and Online CVD Coating to perfectly align with the customers market requirements. Drawing on extensive industry expertise, Stewart provides cutting edge Tin Baths, along with operational and production services, ensuring top tier quality and performance for the glass industry.

StewartFloat® Features

- CVD Coating Integration
- Process Automation
 - Pool Control
 - Temperature Control
 - Cross Ribbon Temperatures
- Excellent Optical Quality
- Zone Atmosphere Control
- Equipment Installation
- Operational Commissioning & Assistance
- Training
- Defect Minimization

Available StewartFloat® Tin Baths

Glass Composition	Soda lime, Ultra-clear, Borosilicate, Aluminosilicate
Glass Tonnage	50 - 1200 MTPD
Glass Thickness	0.12 - 25 mm

Engineered to fulfill your needs

